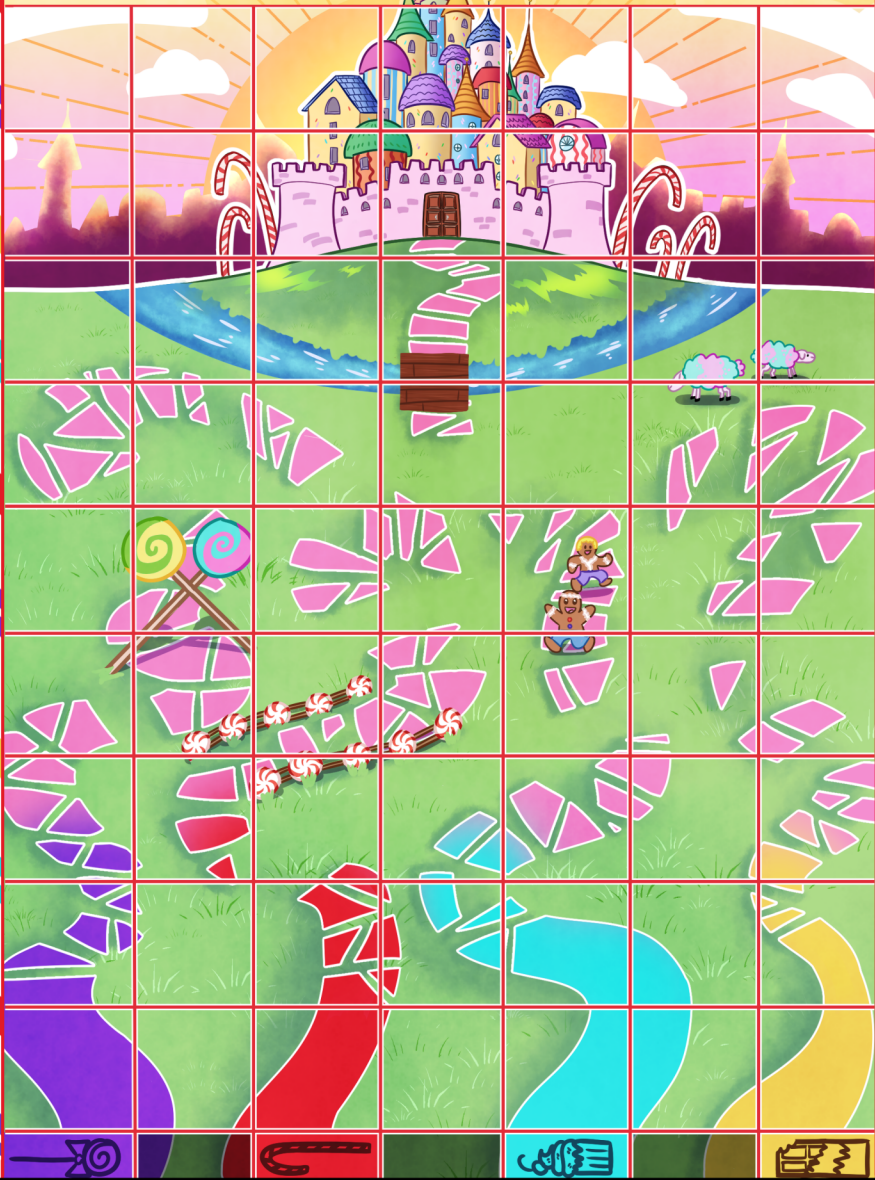


F I N I S H





SKIP

SKIP: Skip the turn of a player of your choosing.



**SHOW
ONE**

SHOW ONE: Pick a player, and they must reveal one card in their hand to the table.



ICE CREAM SLIP: Whenever CUPCAKE player gets sent back a space, draw a new path piece and move forwards.



**FALL
BACK**

FALL BACK: Choose a player, they must move back one tile space and cannot place another until they return to the end of their path.



EDIT

EDIT: You may take the last piece of your path and switch it out for the different path type.



LOLLIPOP SWIRL: Whenever LOLLIPOP player uses +1 PATH or +1 ATTACK, you may also draw a new attack card or path piece.



PATH

+1 PATH: Take an extra path piece. Lay it down and move to the end of your path.



**SHOW
ALL**

SHOW ALL: Pick a player, and they must reveal their hand to you, but not the whole table.

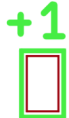


BONBON SPRINKLES: Whenever CHOCOLATE player has to show one card or their whole hand, pick a card from their hand (without CHOCOLATE revealing their cards) and trade one of your attack cards with one of theirs.



REVERSE

REVERSE: Reverse the turn order.



ATTACK

+1 ATTACK: Discard one attack card from your hand and draw a new one.



PEPPERMINT FREEZE: Whenever CANDY CANE player is skipped or battled with, choose another player to skip their turn.



**SWITCH
HANDS**

SWITCH HANDS: Switch attack card hand with a player of your choosing.



BATTLE

BATTLE: Choose a player and battle them.



LICORICE LASSO: If you are in last place, pick a player to fall back onto the same number of tiles away from start as you are.

